

ZEVAC QUAD



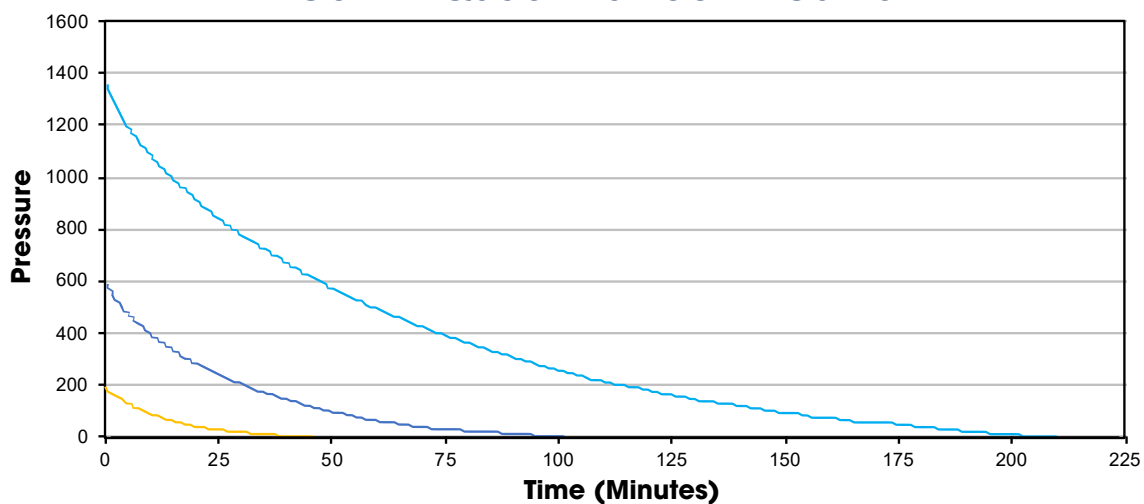
The same trusted ZEVAC operation, now updated and more versatile than ever before. Safely and quietly reduce emissions to ZERO with ZEVAC's patented vacuum and compression technology.

ZEVAC QUAD

58.5" x 41" x 72" | 3350 lbs

Pressure Range: 0 - 1500* psig

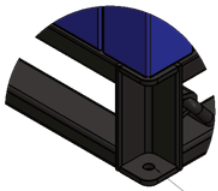
Gen IV Quad Drawdown Curve



NOTE: Air supply for each test was the same: 700 cfm at 150 psig. Results can vary depending on many factors including air compressor, temperature, hose length, etc.

*Differential Pressure values are based on 125 psi supply air. This value can change depending on supply air pressure.

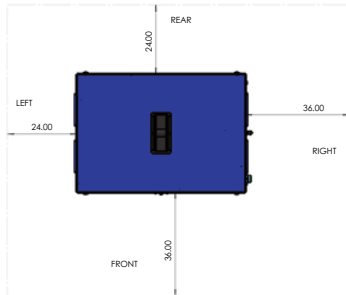
THE PROVEN SOLUTION ANYWHERE VENTING HAPPENS



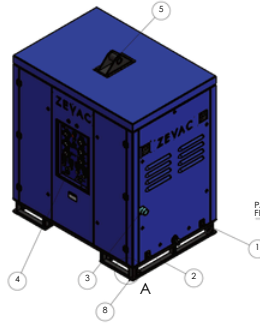
DETAIL A
SCALE 1 : 2

ANCHOR DETAIL: 1/4" PLATE W/
1/2" HOLE IN RECESSED CORNER.
FOR PERMANENT INSTALLATIONS, ANCHORS
OR ANCHORED TOE-CLAMPS ARE RECOMMENDED.

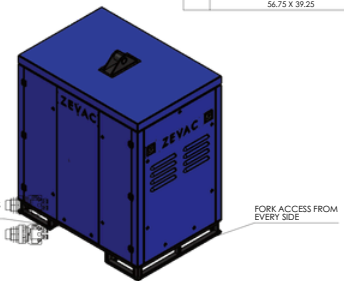
ANCHOR HOLES: @ 0.50



TOP VIEW:
PERIPHERAL CLEARANCE
NECESSARY FOR OPERATION
AND MAINTENANCE



FRONT ISOMETRIC VIEW

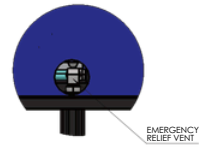
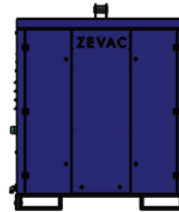
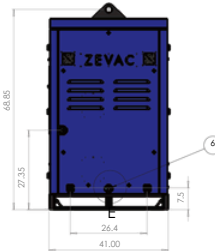


REAR ISOMETRIC VIEW

BILL OF MATERIALS	
ITEM	DESCRIPTION
1	GAS DRAWDOWN INLET 2" CLASS 900 BASED FACE THREADED FLANGE
2	GAS DISCHARGE 2" CLASS 900 W/ASED FACE THREADED FLANGE
3	AIR INLET 2" MNPT
4	OPERATOR PANEL
5	LIFTING LUG @ 2.375" X 4" LONG
6	EMERGENCY VENT 1/2" FNPT
7	TIE DOWN D-RING FOR TRANSPORT ***NOT FOR LIFTING***
8	ANCHOR HOLE 1/2" TYP. 56.75 X 59.25



ANCHOR HOLES: 4X @ 0.50



DETAIL E
SCALE 1 : 4

VENT DETAIL:
FOR NORMAL, MOBILE, OPERATION THIS 1/2"
FNPT ELBOW IS DIRECTED DOWNWARD. FOR
PERMANENT INSTALLATIONS, IT IS RECOMMENDED
THAT THE OPERATOR ROTATE THE VENT UP AND
INSTALL ADDITIONAL ROUTING TO ROUTE POTENTIALLY
HARMFUL GASES AWAY FROM USERS AND BYSTANDERS.
ADDITIONAL ROUTING SHOULD HAVE A CROSS-SECTIONAL
AREA GREATER OR EQUAL TO INSTALLED VENT AND NOT
EXCEED 10 FT IN LENGTH.

